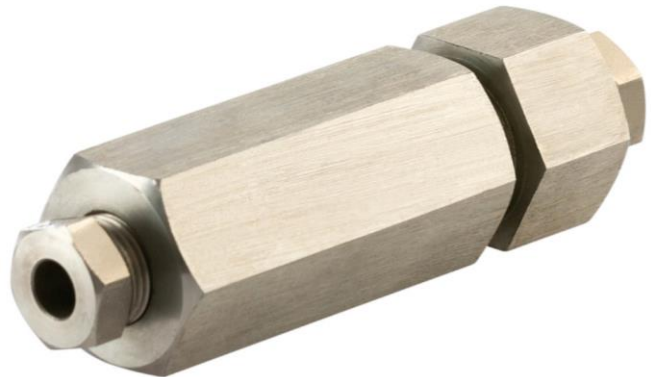


The Chemiquip Super High-Pressure snubber is Designed for the protection of pressure gauges or other pressure devices when they are called upon to work under the extremes of pressure instrument encountered in many chemical processing, refining and synthesizing industry processes.

The porous snubbing element is available in standard porosities for use with a wide variety of liquid viscosities and gases. When the snubber assembly is placed in the line just ahead of the pressure instrument, the instrument reacts to line pressure changes at a rate which is proportional to the pressure differential across the porous membrane. This results in a modularly rapid, but smooth, action of the instrument which is free of fluctuation or pulsations. The snubber element is calibrated to permit equilibrium readings upscale or downscale in approximately three seconds. When it is used with a pulsing system, a mean average pressure reading can be expected with an error to the order of magnitude of 1%. Unlike other types of pressure snubbers, chemiquip porous stainless-steel snubbers resist plugging in service. This freedom from plugging results from the large porous surface which is exposed to the actuating media. The porous material will not erode in service.



- Housing is easily disassembled for cleaning or service
- No moving parts
- Fabricated from Stainless Steel Type 316 for maximum operating Pressures of 30,000 psi or 60,000 psi.
- Unique design, utilizing an O-Ring seal makes it possible to contain pressures to 60,000 psi without applying extreme force to threaded connections.
- Special designs or threaded connections are available to order.

Snubber Element (When ordering, please specify both housing and snubbing element catalog numbers.)

Catalog #	Type of Service:	Viscosity range	Housing Material	Net Weight
HP-50C	High Viscosity Fluids	over 500 S.S.U.	Series 300 Stainless Steel	3 oz.
HP-50D	Heavy Oil	225 S.S.U. to 500 S.S.U.		
HP-50E	Water & Light Oils	30 to 225 S.S.U.		
HP-50F	Vapor and Low Viscosity Fluids	under 30 S.S.U.		
HP-50G	Air or other Gases			
HP-50HX	Pulsating Gas			
HP-50HXX	Extreme Gas Pulsation			

Housing 30,000psi

Catalog #	Tubing Connection (AMINCO) "A"	Pipe Connection "B"	Housing	Net Weight	Length "L"
30-31 HF-4B-GS	1/4"	1/4" NPT	Type 316 Stainless Steel		4 - 3/16"
30-31 HF-4-GS		1/4" TUBE AMINCO (9/16" - 18NF2)			
30-31 HF-6B-GS	3/8"	1/4" NPT			
30-31 HF-6-GS		1/4" TUBE AMINCO (3/4"-16NF2)			
30-31 HF-4-D-GS	1/4"	1/2" NPT			
30-31 HF-6D-GS	3/8"	1/2" NPT			

Housing 60,000psi

60-31 HF-4B	1/4"	1/4" NPT	Type 316 Stainless Steel		5 1/2"
60-31 HF-4-GS		1/4" TUBE AMINCO (9/16"-18NF2)			
60-31 HF-6B-GS	3/8"	1/4" NPT			
60-31 HF-6-GS		1/4" TUBE AMINCO (3/4"-16NF2)			
60-31 HF-4-D-GS	1/4"	1/2" NPT			
60-31 HF-6D-GS	3/8"	1/2" NPT			

Special designs or threads are available to order

